



通过不断的改革创新，蓝深集团生产的低速推流系列QJB型多功能旋流式潜水搅拌机在一次次升级改造中进行的优化组合，现已形成由斜齿轮减速器的减速结构，和新一代玻璃钢整体叶轮相配合的广泛使用，其便捷的安装、稳定的运行、卓越的效能受到了用户的普遍好评和青睐，销量不断攀升。该减速结构具有齿轮采用优质合金钢渗碳、淬火、磨齿等精加工而成，速比准确、精度高、接触性好；输出扭矩及承载能力大、效率高、使用寿命长；便于安装、故障率低、运行稳定、维修方便；结构紧凑、体积小、重量轻；可靠性高、运行平稳、噪音低等特点。另外，该新一代整体式叶轮通过CFD软件优化设计，水力性能好，叶片宽而薄，重量轻、能耗低、效率高、推力大，能减小减速机的使用负荷，运行平稳，延长设备的使用寿命。可快速安装、拆卸，平衡性、匀质性好，可产生大体积流场，服务范围更广。采用无堵塞设计，表面光滑呈后掠式。叶片具有自洁功能和“柔性”并能够吸收发生改变的水力负载，从而有利于创建出柔和的水流。由于叶片采用高强度的玻璃钢材料，在污水介质中性能稳定，耐腐蚀，耐磨性好。而且耐酸、耐碱，抗氧化性好，韧性好，强度高、防水性能好，可以适应在各种类型的污水介质中使用。它的问世一举打破了低速推流型潜水搅拌机应用领域由国外产品一统市场的局面。

如图2所示，低速推流型潜水搅拌机主要由叶轮、潜水电机、减速装置等三大部分组成，叶轮装在减速装置输出轴上。

Through constant innovation, LanShen group production of low speed push flow QJB multi-function screw type series streaming submersible mixer in a meeting in upgrading the optimized combination, now In has formed by inclined gear reducer of the deceleration structure, and a new generation of glass fiber reinforced plastic integrated impeller the widespread use of combination, the convenient installation, stable operation, excellent performance by The user's universal praise and favour, increasing sales. The slowdown has gear adopts the high quality alloy steel structure carburizing, quenching and gear grinding and finishing and into, accurate, precision ratio High, contact the gender is good; The output torque and carrying capacity, high efficiency, long service life; Easy installation, low failure rate, stable operation, convenient maintenance; Compact structure, small volume, Light weight; High reliability, smooth operation, low noise characteristics. In addition, the new generation of integral impeller through the CFD software optimization design, hydraulic performance is good, blade width and thin and heavy Lightweight, low energy consumption, high efficiency, thrust is big, can reduce the use of machine of decelerate load, smooth operation, and prolong the service life of equipment. Rapid installing, remove, balance, well quality The gender is good, can produce big volume flow field, the service a wider range. Using non-clog design, the surface is smooth sweptback. Blade with from clean function and "flexible" and can absorb change happen Become hydraulic load, and to create a downy streams of water. Due to the leaf high strength of the glass fiber reinforced plastic materials, in sewage medium stable performance, corrosion resistance, good abrasion resistance. And acid, alkali resistance, oxidation resistance, good toughness, the intensity is high, the waterproof performance is good, can adapt in various types of sewage medium in use. The appearance of it every broke the low speed Push the flow pattern submersible mixer application field of foreign products series by the market situation.

As shown in figure 2 shows, low-speed flow type push submersible mixer mainly by the impeller, submersible motor, slow, device, the three most of the composition, the impeller into slow device on the output shaft.

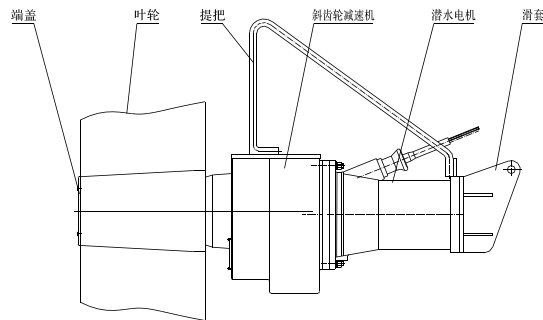


图2

选型注意事项
Lectotype attention items

为保证取得最佳效果，请使用方提供以下资料：

- 1、运用目的；
- 2、池形；
- 3、池尺寸，包括水深；
- 4、介质特性：包括粘度、密度、温度、固体含量等。

搅拌机所需要的配套功率是根据容积大小、池型尺寸、搅拌液体的密度、粘度而确定的，根据具体情况采用一台或多台搅拌机。

*由于技术不断进步，蓝深集团保留修改设计的权利，选型时，请与蓝深集团技术工程部保持联系。

△ QJB型多功能旋流式潜水搅拌机必须完全潜入水中工作，不能在易燃易爆的环境下或有强腐蚀性液体的环境中工作！若用户有特殊使用要求，可与我公司技术工程部保持联系，为其提供最佳解决方案。

To ensure that achieve the best effect, please use the party provide the following information:

- 1.use purpose;
- 2.pool form;
- 3.pool size, including water depth;
- 4.Media properties: including viscosity, density, temperature, solid content, etc.

Mixer need supporting power is based on volume size, pool size, mixing liquid type the density, viscosity and certain, according to the specific circumstances using one or multiple mixer.

* As technology advances, LanShen group reserves the right to change design, selection, please and LanShen group technology engineering keep in touch.

△ QJB type multi-functional swirling submersible mixer must be completely submerged, can't work in inflammable and explosive environment or have strong corrosive liquid environment, work! If you have special request, it can be used with my company technical engineering keep in touch, provide the best solution.



性能参数
Performance parameters

(电压：380伏，频率：50赫兹)：

表1 混合型多功能旋流式潜水搅拌机主要性能参数 Table 1 mixed muti_function swirling submersible mixer main performance parameters

序号 NO.	型号 Model	电机功率 (kW) Motor power	额定电流 (A) Rated current	叶片转速 (r/min) Blade rotation speed	叶片直径 (mm) Blade diameter	轴向推力 (N) Axial thrust	重量 (kg) weight
1	QJB0.85/8-260/3-740 C/S*	0.85	3.2	740	260	163	55
2	QJB1.5/6-260/3-980 C/S*	1.5	3.9	980	260	290	55
3	QJB2.2/8-320/3-740 C/S*	2.2	5.9	740	320	582	110
4	QJB4/6-320/3-980 C/S*	4.0	9.3	980	320	609	115
5	QJB1.5/8-400/3-740/S	1.5	4.5	740	400	600	70
6	QJB2.5/8-400/3-740/S	2.5	7.3	740	400	800	70



性能参数

Performance parameters

(电压: 380伏, 频率: 50赫兹):

表1 混合型多功能旋流式潜水搅拌机主要性能参数 Table 1 mixed multi-function swirling submersible mixer main performance parameters

序号 NO.	型号 Model	电机功率 (kW) Motor power	额定电流 (A) Rated current	叶片转速 (r/min) Blade rotation speed	叶片直径 (mm) Blade diameter	轴向推力 (N) Axial thrust	重量 (kg) weight
7	QJB3/8-400/3-740/S	3.0	8.0	740	400	850	70
8	QJB4/6-400/3-980/S	4.0	9.6	980	400	1200	73
9	QJB4/12-620/3-480/S	4.0	14.5	480	620	1100	184
10	QJB5/12-620/3-480/S	5.0	18.0	480	620	1800	184
11	QJB7.5/12-620/3-480/S	7.5	26.7	480	620	2600	229
12	QJB10/12-620/3-480/S	10.0	29.3	480	620	2900	229
13	QJB12/12-700/3-480/S	12.0	32.0	480	620	3100	250
14	QJB15/12-620/3-480/S	15.0	42.8	480	620	4200	305
15	QJB18.5/12-620/3-480/S	18.5	55.0	480	620	5300	315
16	QJB22/12-620/3-480/S	22.0	65.0	480	620	6100	335

注: 型号后加*号的为铸件搅拌机, 其余为冲压搅拌机 Note: * add after the model for casting the mixers, stamping mixer

(电压: 380伏, 频率: 50赫兹):

表2 推流型多功能旋流式潜水搅拌机主要性能参数 Table 2 push flow type multi-functional swirling diving mixing machine Lord main performance parameters

序号 NO.	型号 Model	电机功率 (kW) Motor power	额定电流 (A) Rated current	叶片转速 (r/min) Blade rotation speed	叶片直径 (mm) Blade diameter	轴向推力 (N) Axial thrust	重量 (kg) weight
1	QJB1.5/4-1100/2-60/B	1.5	3.65	60	1100	680	150
2	QJB2.2/4-1100/2-80/B	2.2	5.05	80	1100	1925	160
3	QJB3/4-1100/2-100/B	3.0	6.64	100	1100	2240	160
4	QJB4/4-1100/2-130/B	4.0	8.62	130	1100	2640	165
5	QJB1.5/4-1400/2-43/B	1.5	3.65	43	1400	650	150
6	QJB2.2/4-1400/2-50/B	2.2	5.05	50	1400	845	160
7	QJB3/4-1400/2-65/B	3.0	6.64	65	1400	1250	160
8	QJB4/4-1400/2-75/B	4.0	8.62	75	1400	1680	172
9	QJB1.5/4-1600/2-39/B	1.5	3.65	39	1600	680	155
10	QJB2.2/4-1600/2-43/B	2.2	5.05	43	1600	910	165
11	QJB3/4-1600/2-51/B	3.0	6.64	51	1600	1548	165
12	QJB4/4-1600/2-62/B	4.0	8.62	62	1600	1810	170
13	QJB1.5/4-1800/2-34/B	1.5	3.65	34	1800	1120	190
14	QJB2.2/4-1800/2-39/B	2.2	5.05	39	1800	1332	200
15	QJB3/4-1800/2-44/B	3.0	6.64	44	1800	1815	200
16	QJB4/4-1800/2-52/B	4.0	8.62	52	1800	2360	280
17	QJB5.5/4-1800/2-62/B	5.5	11.7	62	1800	2820	280
18	QJB2.2/4-2200/2-30/B	2.2	5.05	30	2200	1305	210
19	QJB3/4-2200/2-34/B	3.0	6.64	34	2200	1810	210
20	QJB4/4-2200/2-38/B	4.0	8.62	38	2200	2420	280
21	QJB5.5/4-2200/2-43/B	5.5	11.7	43	2200	2760	290
22	QJB3/4-2500/2-29/B	3.0	6.64	29	2500	1960	220
23	QJB4/4-2500/2-33/B	4.0	8.62	33	2500	2640	290
24	QJB5.5/4-2500/2-39/B	5.5	11.7	39	2500	2920	290
25	QJB7.5/4-2500/2-43/B	7.5	15.9	43	2500	3230	300

安装系统说明

Installation system that

安装潜水搅拌机可采用的安装技术多种多样。下面提供了其中最常用、最方便、最快捷的安装方式, 该专用安装系统可在无需排出池中污水的情况下, 能快速安装和拆卸潜水搅拌机。并且使用安全可靠。我们还可以提供其它安装方法的指导。

潜水搅拌机的潜水深度可以根据需要进行垂直方向的调节。吊架座、支撑架和下托架与池的联结均采用与预埋件焊接固定。客户订货时, 请提供池深H, 以便我公司加工时确定导杆尺寸及支撑架的数量。安装系统的材质采用不锈钢(或碳钢)制造。起吊装置除吊架座外, 数台搅拌机可共用一套。为方便搅拌机安装及起吊, 应在起吊位置的护栏上开活动门。

一般地每个规格搅拌机对应一种型式安装系统(见表3、表4), 如用户有特殊需要, 可另配其它型式安装系统。各型式安装系统其结构有所不同。

Installation submersible mixer can use the installation technology of DuoZhong varied. Provide one of the most commonly used below, the most convenient and the most convenient installation way, this special installation system can be in no The pool of sewage discharge to the case, can quickly install and remove the submersible mixer. And use safe and reliable. We can also provide other method of installation guide.

The submersible mixer diving depth may, according to needs to adjust the vertical direction. Pylon seat, supporting frame and bracket and of the connection pool under all use and embedment parts welding fixed. guest When ordering households, please provide pool H, so that I company deep processing sure guide bar size and the number of supporting frame. Install the stainless steel material system (or carbon steel) manufacturing. Lifting up Except for a hanger outside, several machines mixer can use a set of. For the convenience of mixer installation and hoisting lift, should be in the open position on the fence door activities.

Generally each specification corresponds to a blender types installation system (see table 3, table 4), such as user with special needs, can match the other other types installation system. Each type of installation All the different structure.

安装注意事项

Installation note

- | | |
|----------------------------|----------------------------------------------------------------------------------------|
| 1、导杆应与水平面垂直, 可采用铅垂校正; | 1. guide bar should be vertical, horizontal and vertical adjustment can be used lead; |
| 2、起吊潜水搅拌机时, 叶轮端较水平面上仰2-5°; | 2. hoisting submersible mixer, a plane on the impeller should lift up 2-5°; |
| 3、起吊中心和潜水搅拌机的起吊重心处于同一垂直线上; | 3. hoisting center and submersible mixer hoisting up focus on the same vertical line; |
| 4、导杆与支撑架应与池底预埋件焊接牢固。 | 4. guide bar and supporting frame should be and bottom embedment parts welding firmly. |

安装系统及尺寸

Installation system and size

安装系统根据搅拌机主机结构特点及设备安装运行需要分为安装系统 I、II、III、IV 共四种型式。而安装系统 I 又分为 I-1 和 I-2 两种型式。一般地每个规格搅拌机对应一种形式的安装系统, 如用户有特殊需要, 可另配其它型式安装系统。

安装系统 I-1 (本系统只适用于 QJB0.85/8-260/3-740、QJB1.5/6-260/3-980)

如图3所示, 安装系统 I-1 主要由手拉葫芦、起吊柱、起吊环链(以上附件池深≤3米时无)、导杆、上转盘、支撑架、支撑板和下转盘等组成。潜水搅拌机通过下转盘与导杆联接, 悬挂于导杆下部, 导杆则通过上转盘固定在上支撑架上。潜水搅拌机可通过下转盘上联接螺栓位置的改变, 在铅垂面上与水平面成一定的倾角安装; 潜水搅拌机也可通过上转盘与导杆的联接螺栓位置的改变绕上转盘轴线作120°旋转, 以适应不同方向搅拌或推流, 消除水池中的死区, 使水流处于最佳运行状态。

该型安装系统常规安装为膨胀螺栓固定即可, 也可采用预埋件安装形式, 预埋件尺寸及位置按图布置。

Installation system according to host structure characteristics and mixing machine equipment installation operation need to install the system is divided into I, II, III, IV of total four types. And installation system I and divided into I-1 and I-2 of two types. Generally every specification mixer corresponding one form of installation system, such as user with special needs, can match the other other types installation system.

Installation system I-1 this system is only applicable to QJB0.85/8-260/3-740, QJB1.5/6-260/3-980)

As shown in figure 3 shows, installation system I-1 mainly by the guide bar, on the turntable, supporting frame, the wheel etc. Submersible mixer through rotary and guide bar under the connection, hangs on the guide bar Department, guide bar is through rotary fixed in support on the shelf. Submersible mixer can by the connecting bolt on change the position of the vertical plane, lead to the horizon into certain Angle Ann Attire; Submersible mixer also through rotary and guide bar on the change the position of the connecting bolt around 120° on the axis of rotation, to meet the different direction stir or push flow, eliminate pool The dead zone, let the water was in the best condition.

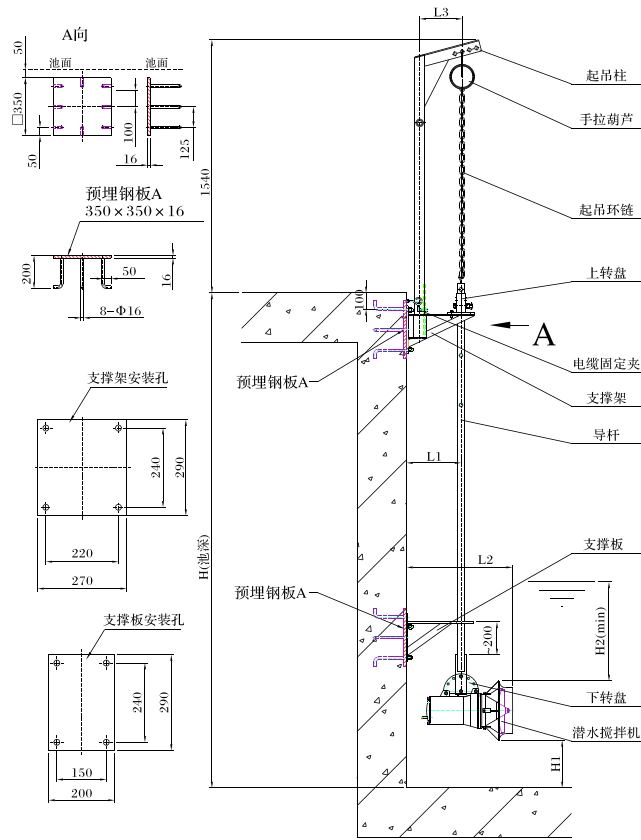


图3 I-1型安装系统示意图
Figure 3 I-type 1 installation system schemes

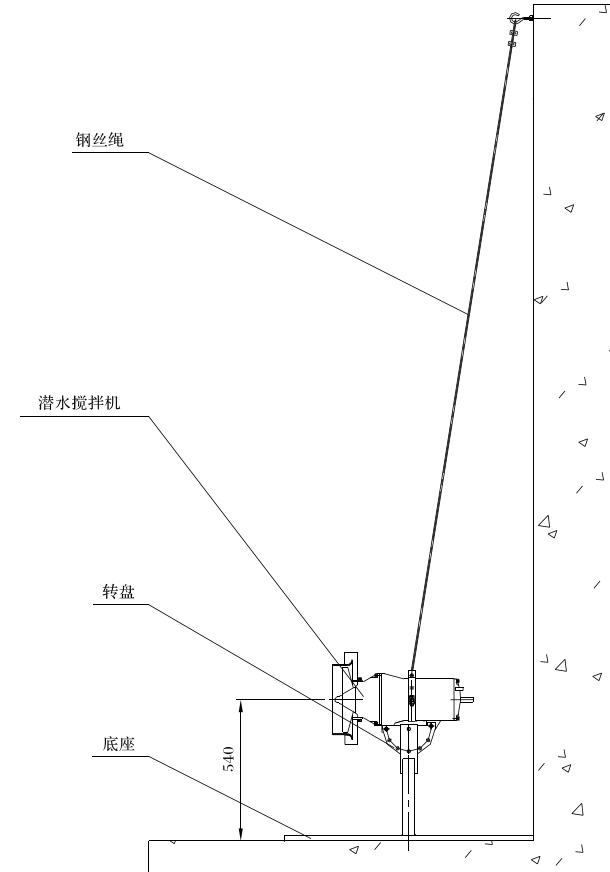


图4 I-2型安装系统示意图
Figure 4 I-type 2 installation system schemes

安装系统 I-2 (本系统只适用于QJB0.85/3-260/3-740、QJB1.5/6-260/3-980)

如图4所示，安装系统 I-2，属移动式安装，主要由主机、转盘、底座等组成。底座与池底接触较好并紧靠池壁，可以在平面方向调整角度。

Installation system I-2 (this system only apply to QJB0.85/3-260/3-740, and the QJB1.5/6-260/3-980)

As shown in figure 5 shows, installation system I-2, is mainly by the host, mobile installation, the turntable, base etc. The base and the bottom of the pool is good and close contact with the wall, can be in the plane Direction Angle adjustment.



安装系统 II
Installation system II

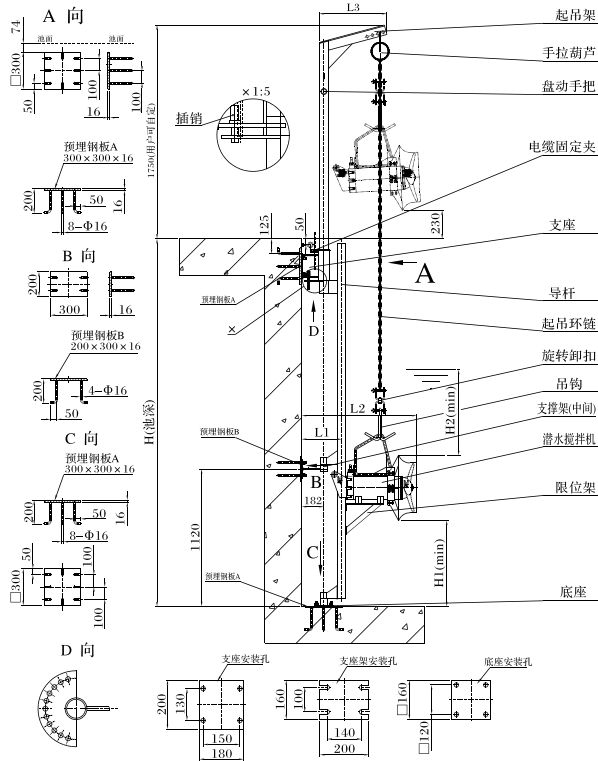


图5 II型安装系统示意图
Figure 5 II type installation system schemes

如图5所示, 安装系统 II 主要由手拉葫芦、起吊架、起吊环链、吊钩、旋转卸扣、支座、导杆、中间支撑架(池深≤4.5米时无)、限位架、底座等组成。导杆通过焊接在主体上的铰轴定位于支座、中间支撑架、底座同心轴线上, 并可在水平面内转动±60°, 以适应不同方向搅拌或推流, 消除水池中的死区, 使水流处于最佳运行状态。潜水搅拌机通过导轮沿导杆上下移动; 起吊架可安装在支座上并可绕其定位轴线旋转360°, 以方便安装及维护。为增加潜水搅拌机运行时的可靠性, 减缓潜水搅拌机运行中的振动, 一般限位架直接焊在导杆上, 并在潜水搅拌机与限位架间加设减震块。限位架焊接在导杆上可在出厂前焊接, 也可在现场安装时焊接。如用户无特殊要求, 一般在出厂前焊接。

该型安装系统常规安装为膨胀螺栓固定即可, 也可采用预埋件安装形式, 预埋件尺寸及位置按图布置。

As shown in figure 5 shows, II installation system mainly by the hand in the bottle gourd, fittings, the rings chain, bearing, guide bar, intermediate support stands (more than 4.5 m deep pool without), limit frame, base, etc Composition. Guide bar through the welding in the hinged on ontology located in bearing, middle supporting frame, base with one axis, and can in the plane of the rotating +60°, in order to adapt to the different direction stirred Mix or push flow, eliminate the dead pool area, make water was in the best condition. Submersible mixer guide through the guide bar to move up and down; The pylon can be installed on the bearings and around it Axis rotation 360°, positioning with convenient installation and maintenance. To increase the reliability of operation submersible mixer, slow down the operation of the submersible mixer vibration, generally limit frame directly welded In guide stem, and the submersible mixer and limit frame shock set of between. Limit frame welding in guide stem can be in before they leave the factory, also can be in welding the weld when installation. If the user does not have the special Requirements, generally in the welding before they leave the factory.

安装系统 III
Installation system III

如图6所示, 安装系统 III 主要由手拉葫芦、起吊架、吊架座、起吊环链、吊钩、旋转卸扣、上支撑架、导杆、中间支撑架(池深≤4.5米时无)、限位架、底座等组成。导杆通过焊接在主体上的铰轴定位于上支撑架、中间支撑架、底座同心轴线上, 并可在水平面内转动±60°, 以适应不同方向搅拌或推流, 消除水池中的死区, 使水流处于最佳运行状态。潜水搅拌机通过导轮沿导杆上下移动; 起吊架安装在吊架座上并可绕其定位轴线旋转360°, 以方便安装及维护。为增加潜水搅拌机运行时的可靠性, 减缓潜水搅拌机运行中的振动, 一般限位架直接焊在导杆上, 并在潜水搅拌机与限位架间加设减震块。限位架焊接在导杆上可在出厂前焊接, 也可在现场安装时焊接。如用户无特殊要求, 一般在出厂前焊接。

该型安装系统常规为与基础采用预埋钢板焊固的联接方式, 预埋件尺寸及位置按图布置。

As shown in figure 6 shows, III installation system mainly by the hand in the bottle gourd, fittings, pylon seat, the rings on the chain, supporting frame, guide bar, intermediate support stands (pool more than 4.5 m deep, no) Limit frame, base etc. Guide bar through the welding in the hinged on ontology positioning in the supporting frame, middle supporting frame, base with one axis, and can in the plane of the rotating +60°, in order to adapt to the different direction stir or push, eliminate the dead pool flow area, make water was in the best condition. Submersible mixer guide through the guide bar to move up and down; Up pylon installed in Pylon seat around the orientation and can rotate for 360° to axis is easy to install and maintain. To increase the reliability of operation submersible mixer, slow submersible mixer, the operation of the vibration General limit frame directly welded in guide stem, and the submersible mixer and limit frame shock set of between. Limit frame welding in guide stem can be in before they leave the factory, also can be in welding the weld when installation Pick up. If the user does not have special requirements, generally in the welding before they leave the factory. This installation system and the embedded steel welding solid foundation of the connection way.

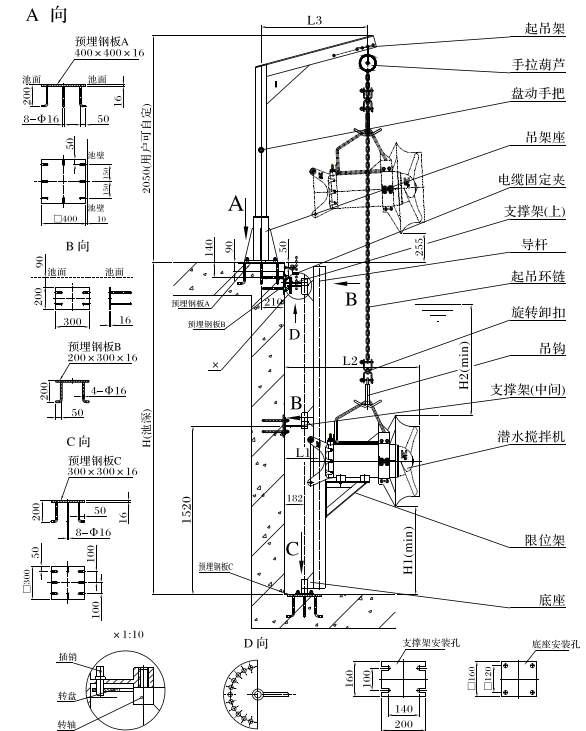


图6 III型安装系统示意图
Figure 6 III type installation system schemes